

norma

A U D I O   E L E C T R O N I C S



**Revo IPA-70B USB**  
**SAFETY MANUAL**  
**USER MANUAL**

NORMA AUDIO ELECTRONICS TAKES NO RESPONSIBILITY FOR EVENTUAL ERRORS THAT MAY APPEAR IN THIS PRE-PRODUCTION MANUAL.



## INDEX

### SAFETY MANUAL

- 1 PRELIMINARY INDICATIONS
- 2 PACKING & UNPACKING
- 3 TRANSPORT AND POSITIONING
- 4 CONNECTIONS
- 5 MAINTENANCE AND SUPPORT
- 6 USAGE
- 7 REMOTE CONTROL
- 8 GENERAL
- 9 RECYCLING,
- 10 LIMITATION of USE in USA-CANADA-MEXICO

### USER MANUAL

- 1 CONTROLS AND CONNECTION
- 2 USE
- 3 MAINTENANCE
- 4 SPECIFICATION
- 5 TESTING
- 6 USB CONNECTION GUIDELINES
- 7 REAR CONTROLS AND CONNECTIONS LIST

# Safety Manual

## 1 - PRELIMINARY INDICATIONS

Read this manual carefully before removing the unit from its packaging. Anyone considering it superfluous, ignoring what said before assumes all responsibility for any accidents or incidents derived from improper use. The manual explains the main safety rules that must be followed carefully: Failure to comply may result in serious injury, as with any device or appliance powered by the mains voltage. They also learn how to use for optimal performance and diversified products, and these, although machines for playing recorded music, are designed to protect the user from hazards arising from the presence of voltage. Must be careful not to touch live electrical parts wearers of cardiac devices electrically powered [peace maker] or therapeutic devices for electric or electronic. The electrical safety is due to its connection to safety ground. Before connection and use so make sure that the system grounding is efficient and the corresponding regulations. NORMA is not responsible for any damage resulting from wrong system grounding or inefficient directives and regulations. Also check that the mains voltage is the same as that which must be fed the equipment.

## 2 – PACKING & UNPACKING

Remove the machine from its packaging and place it in a horizontal position, resting on the lower legs. Pay attention to the material and packaging bags, should be stored in a dry place away from fire hazards, given the nature of the materials they are made of. Should not be accessible to children to avoid the danger of suffocation.

## 3 - TRANSPORT AND POSITIONING

Move and transport it carefully, taking care to maintain a firm and safe grip, do not place or carry it to heights that can become dangerous in the event of a fall.

Place it on solid supports and surfaces, out of the reach of children.

The electronics must operate in a dry place sheltered from the weather of any kind. Do not expose the electronics to any type of moisture, rain, vapour, spray mixtures. Keep the device away from sources of electric fields, magnetic and electromagnetic fields. Never place in devices one above the other; they must operate in a horizontal position in order to better dissipate the heat produced, but should never be overlapped. The equipment must be installed away from sources of heat and direct sunlight, so as to allow good air circulation.

### 3.1 TEMPERATURE

The device is designed to operate in normal domestic environments at a temperature ranging between 10 and 30 degrees centigrade. During operation of the amplifier, and for a time consistently long after it is turned off, the heat sink can reach high temperatures and therefore dangerous to touch. Never touch the heat sink during operation and for at least one hour after shutdown.

## 4 - CONNECTIONS

Be sure to read the writing found on covers and rear panels, study the layout and get a feel for subsequent connections.

Connect inputs and outputs always with power turned off.

Allow at least 10 minutes after turning off the unit and not operate until the lights internal and / or external prove still lit, even weakly. Be careful not to short or connect any of the terminals, you can damage speakers and electronics. The last connection before use continues to be the power supply.

## 5 - MAINTENANCE AND SUPPORT

The equipment must be checked by qualified personnel when:

- The power cord, the plug or the socket appear to be damaged;
- Objects, liquids or mixtures of any kind has been spilled into the appliance;
- The unit does not operate properly;
- The device has been dropped or damaged;
- The device emits an unusual odour or smoke;

Do not open or remove the cover under any circumstances. Not personally intervene to replace the fuses. The operation, even in its own intrinsic banality, involves extremes caution and requires specialised personnel who are familiar with electrical equipment and the ability to investigate the cause of the fault.

For any operation always contact a service center authorised by the manufacturer and that has original spare parts. The inner tunnel must not be removed by anyone and for any reason: it is essential for the isolation from the mains voltage. For any problem that assistance deemed to come from an element in series with the mains voltage, the device must be sent to the manufacturer. The electronics must not be altered or tampered with. In fact, despite the measures designed to protect the user, it is impossible to predict any misuse of the equipment. Means for misuse any action contrary to the above issues or needs of tool that disassemble, unscrew and remove mechanical and electrical parts of the product. Failure to use original spare parts makes the device does not meet the design specification.

## 6 - USAGE

Avoid touching either directly or through objects and tools inside the case until it is connected to the network: this action, as well as causing damage to the user because exposed to dangerous voltage may damage the electronics.

- Do not remove the top cover for any reason, which is essential for the isolation from the high voltage inside. During operation and as long as the equipment is connected to the mains for any reason do not touch the metal part of the electrical connection terminals: at their ends may be present high voltages.

For cleaning do not use any type of solvent hate volatile substance, alcohol, spray or flammable. Never clean the appliance during operation. For cleaning methods consult the owner's manual.

## 7 - WARNING USB INPUT

The optional USB input provided on the Norma REVO IPA-70B is designed to work with PCM signals of up to 192 KHz and DSD64 signal. The DSD signal MUST BE transmitted ONLY with "DSD OVER PCM" codification. Any other use of DSD signal might not be recognized from the USB receiver and could result in unexpected behaviours, which could seriously damage any equipment connected to the Norma REVO IPA-70B. Norma takes no responsibility in any damage that may occur due to this wrong usage.

## 8 - REMOTE CONTROL

Use the remote control with the attention reserved for electronics in general, avoid exposing it to excessive heat, humidity, magnetic fields and shocks that could affect its functionality. Use only alkaline batteries of the type indicated in the remote control and insert them properly orienting the positive and negative poles. Battery life varies depending on usage. Once discharged, not groped to refill them. The batteries should be stored in appropriate containers for disposal with the least possible damage to the environment. Keep batteries out of the reach of children and pets. Remove them from the remote control if you will not use it for long periods.

## 9 - GENERAL

Failure to comply with any of the points above will void the warranty. The manual safety and operating instructions must be kept with the packaging and always accompany the appliance for moving or shipping. For any problem of any kind please contact the manufacturer directly. Anyone who fails to comply with the above particulars makes devices have been ineffective, the consequences of such actions in violation of the rules of safety and will only be attributed to the irresponsible superficiality users. NORMA is not responsible for any errors, omissions or incompleteness of this manual, as it is not responsible for accidents or damages of any kind that may result from non-compliance, even partial, of the information provided in this manual. Despite the effort to identify all possible situations of danger, is not responsible for any damage that may be caused to people or things from improper use of the appliance or done against common sense.

## 10 - RECYCLING

Caring for the Environment by Recycling



Legislative Decree 25 July 2005, 151

Implementation of Directives 2002/95/EC, 2002/96/EC and 2003/108/EC on the reduction of use of hazardous substances in electrical and electronic equipment and the disposal of waste

This product is marked with the recycling regarding the disposal of electrical and electronic equipment. This means that this product must be taken to a recycling center in accordance with Directive 2002/96/EC, so that they can be recycled or dismantled so as to minimise the impact on the environment. Do not dispose of this product as household waste. If no suitable collection systems, please contact the authorised service center nearest you, your dealer or, in the case of Italy, please contact the manufacturer directly.

For more information on this you may want to contact your local or regional.

## **11 - LIMITATION of USE in USA-CANADA-MEXICO**

The use of any NORMA AUDIO, OPAL ELECTRONICS product in USA, CANADA, MEXICO is authorized ONLY if the product has been imported and sold by NORMA's official distributor, as indicated on NORMA AUDIO website ([www.normaudio.com](http://www.normaudio.com)).

If the product is not sold by NORMA's official distributor, in addition to the following documents:

- Safety Manual, User's Manual, warranty, conditions of service and repair - OPAL ELECTRONICS NORMA makes

ABSOLUTE PROHIBITION OF USE of any of its products in the following countries:

### **UNITED STATES OF AMERICA, CANADA, MEXICO**

As stated in the SECURITY MANUAL, in the USER MANUAL, and in the WARRANTY DOCUMENT, OPAL ELECTRONICS and NORMA AUDIO strictly forbid the use of any kind of NORMA products in the following countries: USA, CANADA, MEXICO.

In These country is strictly forbidden:

- To import (directly or agency)
- To sell
- To use (including occasional use or for short periods of time)

any kind of NORMA AUDIO product, unless the unit has been imported and sold by NORMA's official distributor.

Therefore, OPAL ELECTRONICS and NORMA AUDIO can not be held responsible for any loss or damage, both direct or indirect, caused by unauthorised use of their products in the above mentioned countries.

# User Manual

Congratulations!

The product you have purchased and you are going to use is the result of a long process of research and development, to bring you the best that current technology allows us to express in electronic intended for audio playback, both in terms of construction quality that listening quality.

We are confident that you will find great satisfaction from the use of our products, which, if treated with care, will reciprocate with a durable reliable. However, prior to use, is indispensable to read and transpose the brief notes attached below.

## 1 - CONTROLS AND CONNECTION

Refer to the attached drawing in the last pages of the manual

### 1.1 LIST OF COMMANDS AND FRONT INDICATORS

Indicators of input selection

#### 1 - Indicator IN 1

If the IN 1 input is selected [also by remote control] indicator is on.

#### 2 - Indicator IN 2

If the IN 2 input is selected [also by remote control] indicator is on.

#### 3 - Indicator IN 3

If the IN 3 input is selected [also by remote control] indicator is on.

#### 4 - Indicator IN 4 [PHONO]

If the IN 4 input is selected [also by remote control] indicator is on.

Input IN 4 can be used as phono input through optional board.

Input IN 4 can be used as USB input through optional board.

#### 5 - Indicator IN 5

If the IN 5 input is selected [also by remote control] indicator is on.

Only via IR the IN5 can be used as REC-OUT, in this way the selected input, with the exception of the direct input DIR, can be send as an output to a recorder.

#### 6 - DIRECT indicator [AV IN]

If the input DIR is selected [also by remote control] indicator is on.

This input is configured as a direct input to the final section. In this case the listening volume is not adjustable by the volume control, but depends only on the level of the input signal.

#### 7 - POWER indicator

If the unit is turned on, [even by remote control] indicator is illuminated at high intensity.

In STANDBY indicator is illuminated at low intensity.

In case of intervention of the protection circuits the indicator flashes at low intensity.

When the MUTE function is active the indicator flashes at high intensity.

#### 8 - Multifunctional control SEL

Selection command used to power on the amplifier and for input selection.

#### 9 - Infrared receiver for remote control [IR]

Optical receiving window for the infrared sensor of the remote control.

#### 10 - Listening VOLUME control

Control speaker volume. Is also actuated by infrared remote control.

### 1.2 CONTROLS AND REAR CONNECTIONS

#### A - Mains Switch, Power ON / OFF.

Mains power switch. Housing for turn ON / OFF connection of the mains AC power.

#### B - Mains Socket Plug.

Mains power connector. Housing for connection of the network cable according to IEC / CEE 22. Check that the mains voltage corresponds to that indicated on the label on the rear panel.

#### C - Fuse

AC mains fuse. Verify that the voltage, the type and value coincides with that indicated on the rear panel. Attention!! For any reason the user must replace the fuse, it is a operation reserved for qualified personnel in the service centers.

#### D - Heatsink

Device used for the dissipation of the heat generated by the amplifier.

During normal operation of the amplifier, and for a long time after it is turned off, the heatsink can be very hot and therefore dangerous to touch. Never touch the heatsink during operation and for at least one hour after shutdown.

#### U - GND: GND Phono

Ground socket for turntable in the case of use of internal phono stage [optional].

#### E - Speakers output [positive] left channel

Output jack of positive power.

#### F - Speakers output [negative] left channel

Output jack of negative power.



**G - Speakers output [positive] right channel**

Output jack of positive power.

**H - Speakers output [negative] right channel**

Output jack of negative power.

To connect the speakers do not use banana terminals front insertion of 4 mm.

**I / L - IN 1: plug RCA connection socket**

Input socket for signal IN 1 [phono] channel right / left.

**M / N - IN 2: plug RCA connection socket**

Input socket for signal IN 2 channel right / left.

**O / P - IN 3: plug RCA connection socket**

Input socket for signal IN 3 channel right / left.

**Q / R - IN 4 [PHONO or USB]: plug RCA connection socket**

Input socket for signal IN 4 [Phono or USB] channel right / left. The input IN 4 can be configured as an input for the pick-up [phono] mm / mc by inserting inside the appliance the appropriate form of signal preamplification, or as an USB input if the board is mounted.

**S / T - IN 5 [REC OUT]: plug RCA connection socket**

Input socket for signal IN 5 channel right / left. The input IN 5 can be configured (only via remote control), as an output OUT REC; in this way the selected source, with the exception of the direct input DIR, can be sent as an output to a recorder.

**U / V - IN DIRECT [AV IN]: plug RCA connection socket**

This input is configured as a direct input to the final section. In this case the listening volume is not adjustable by the volume control, but depends only on the level of the input signal.

**X - USB : USB plug**

USBA input type B for digital input in the case of use of internal USB DAC stage [optional].

**1.3 NOTE TO CONNECTIONS**

The device must be able to make the most of their features. Nothing in the listening chain should not be overlooked, starting with the interconnect cables, which must be of excellent quality, very transparent and neutral.

The NORMA products are of extremely high quality and should be given them the opportunity to develop the best performance.

Nothing in the listening chain should be underestimated, from the quality of the cables to the position of the speakers.

For example, if cables used are of low quality the resulting sound will be much less than the potential of the device.

**1.4 THE WARM UP and RUN IN**

The warm up is a fundamental factor. For the best sound performance, we recommend an initial run of about 200 to 300 hours of operation with active speakers connected and music played at a normal listening level. After a long period of inactivity, it is recommended to restore the run in. Similarly, to obtain the best sound we recommend to warm up the product for at least 3 - 4 hours.

**1.5 THE PROBLEM OF HUM**

Frequently the connection of multiple devices can cause a certain amount of humming, even when the individual devices are entirely silent. Connecting together the equipment can create ground loops, that for induction introduce in the audio signal a certain amount of network harmonics. This problem, which also affects the professional installations more sophisticated, is long-standing and not easy to solve; its influence is particularly evident in the case of high gain amplifiers and in the presence of signals of very low amplitude. The situation may sometimes be particularly critical with regard to the phono stages, turntables and cartridges.

We point out some possible remedies:

- Reduce the length of the connection cables;
- Change position of signal cables and power network;
- Increase the distance or arrange them in a different way;
- Avoid using devices that can induce electromagnetic fields or interference, such as electric motors, fluorescent lights or lamps for low voltage transformers;
- It may be useful to raise the shields of the mass signal connection from one side of their termination. If a device proves involved in hum problems and / or ground loops is made precise prohibition disconnect the

ground of electrical safety, contact the manufacturer instead to try to solve the problem.

- The electrical safety is due to its connection to safety ground. Before connecting and use the device, make sure that the grounding system is efficient. NORMA is not responsible for any damage resulting from wrong system grounding or inefficient directives and regulations or a disconnection in any way made, ground security equipment.

- Check that the power cable network has the ground connection and do not remove it for any reason.

- The new LED TV or PLASMA TV emit large amounts of infrared rays that can interfere with the IR remote control signal.

## 2 - USE

### 2.1 NORMA IR REMOTE DESCRIPTION

The IR remote can access all operating functions, also contains controls for volume setting, built at two speeds: Standard (fast, VOL - / VOL + +) and fine (slower VOL- / VOL +) . On the remote control is also present the MUTE key that completely mute the output signal. This condition is indicated by the flashing of the POWER indicator to high intensity.

Some of the controls on the remote IR may be inactive for future use.

### 2.2 TURN ON \ OFF

The amplifiers of the REVO series are equipped with a sophisticated power on system, integrated with the system remote control and electronic protections. This system consists of three phases: POWER OFF, STAND-BY, POWER ON [OPERATE].

2.2.1 POWER OFF: In this phase, the rear control switch is in the OFF position and the amplifier is off.

2.2.2 STAND-BY: placing the rear control switch in the ON position, the amplifier is active in STAND-BY POWER indicator on the front panel will lights up at low intensity. This condition can be maintained indefinitely, the amplification stages are not powered, but the amplifier is ready to receive the command switch.

2.2.3 POWER ON [OPERATE]: the power is on to all intents and purposes, this can be determined by the prolonged action on the front SEL button or IR remote POWER button. In both cases, initially the indicator flashes for a period of time equal to approximately 10 seconds. Subsequently, the light indicator turns solid, indicating the complete operation of the amplifier and the connection of the speakers.

2.2.4 STAND-BY: to bring the amp in STAND-BY, long press the SEL button [or the POWER button on the remote control], the indicator will switch to low-intensity lighting.

2.2.5 POWER OFF: to bring the amplifier in POWER OFF condition, after having acted on the POWER command, put the rear control switch in OFF position. Never work directly on the rear control without first place the amplifier in STANDBY.

### 2.3 PROTECTION CIRCUIT

Inside the amplifier REVO IPA-70B are present some sophisticated protection circuits that control the temperature of the heatsinks, the presence of any offset current exceeding the limit value and the abnormal supply of output current (short circuit).

#### 2.3.1 THERMAL PROTECTION

In case of intervention of thermal protection amplifier will automatically shuts down and the Power indicator goes completely off. You can not in any way turn it back on until the temperature has returned at the correct value, and this will be indicated by the restart of the POWER of low intensity. Only then you can repeat the POWER ON procedure. The amplifier will not automatically restores the state of re-ignition.

#### 2.3.2 DC OFFSET PROTECTION

In case of protections for the presence of DC component output, the amplifier turns off and the power indicator switches to low intensity flashing. You can turn it back on only after switching off the appliance at the rear switch and leaving it off for at least 10 seconds.

If the fault persists, the amplifier would run again in terms of protection. In this case, try to disconnect all signal cables and repeat the process of restarting the unit. Should the situation persist, contact your service representative.

The amplifier will not automatically restores the state of re-ignition.

## 2.4 INPUTS SELECTION

The selection of Input in main listening, is acting with a quick tap on the multi-function control SEL. The inputs will be selected in sequence IN 1, IN 2, IN 3, IN 4, IN 5, DIRECT. Using the remote control you can select input by direct access with the numeric keys 1-6 or in sequence with the SEL-/ SEL +

If it is activated on the REC OUT IN connection 5 (turned on and off by remote control with the REC button), the input IN 5 is skipped in the selection, since it is operating as an output. In order to introduce any noise, we recommend you to keep the REC OUT under OFF whenever it is not actually used. For greater operating convenience, the REVO series amplifiers have the resume function [state was saved before shutting down], so that for each start (from STAND-BY) the controller is ready on the input selected before turning off. The configuration memory is lost if you flip the switch back to the network, or if there is no main power.

## 2.5 SELECTION OF OUTPUT REC OUT

REVO series amplifiers have the ability to connect a recorder to the output REC OUT. It is possible to activate and deactivate this connection only via remote control with the prolonged action on SET (or short action on REC button, if present) button on IR remote control. In order to not introduce any noise, we recommend you keep the REC OUT under OFF whenever it is not in use

## 2.6 SELECTION OF DIRECT ENTRY (AV IN)

This input is configured as a direct input to the final section, for example for connection to an Audio Video processor. It is activated by remote control by pressing 6 or by sequential selection. Selecting this input, the listening volume is not adjustable by the volume control, but depends only on the level of the input signal. Pay attention to the input level in order to avoid channeling too much power to the speaker

## 2.7 LISTENING VOLUME CONTROL

The listening volume can be adjusted via the front knob or the remote control, using the function keys VOL-/ VOL + (fine tuning) or VOL - / VOL + + (quick adjustment).

To avoid damage to your speakers, before turning ON always place the control fully counterclockwise to MIN. It is also advisable to set the volume to minimum during each input selection and / or connection change .

## 2.8 CONNECTING THE SPEAKERS

The speakers should be connected by wires to the SPEAKERS OUTPUT of adequate quality and diameter [at least 4 mm  $\square$ ].

In addition:

- The connection cables must have the same length for both channels even if the distance between the speakers and the amplifier should be different;
- The cables must not be folded or rolled;
- The safety regulations require that the cables must not be pushed into the sockets of the amplifier via 4mm banana terminations;
- Nominal impedance of the speaker must have not less than 4 ohms;
- The speakers should not be connected in parallel with each other.

Caution: To prevent damage, each connection must be done when the appliance is switched off and unplugged from the mains.

## 3 - MAINTENANCE

### 3.1 CLEANING

Before cleaning the unit turn it off, unplug it from the electricity supply and wait at least 10 minutes. Your device has been designed with the best technical solutions combined with an aesthetic finish of the highest quality, but for it to remain unchanged over time, it is essential to observe the following methods:

- Don't dry-clean surfaces and in particular the front panel;
  - Lightly dampen the cloth with a small amount of warm water (40-50 degrees);
  - Make circular movements and do not press hard on the panel.
  - Dry off gently, always with cotton or a soft cloth, making a very delicate circular motion.
  - Be very careful to avoid that water penetrates into, the cloth should be moist but not wet.
  - Do not reconnect the unit until it is completely dry.
  - Under no circumstances use alcohol, solvents, gasoline or any type of chemical product.
- Please note that the finish and aesthetic components are in no way covered by the warranty.

### 3.2 REPAIRS

For any inconvenience refer to the safety manual. The products are the result of precision engineering with sophisticated circuitry and extreme components. Therefore require, in case of failure, of a highly qualified assistance that has absolutely original spare parts.

The manufacturer is available to clients for any problem. NORMA is not responsible for any errors, omissions or incompleteness of this manual, as it is not responsible for accidents or damages of any kind that may result from non-compliance, even partial, of the information provided in this manual. Despite the effort to identify all possible danger situations, NORMA is not responsible for any damage that may be caused to people or from improper use.

## 4 SPECIFICATIONS

### Specifications REVO IPA-70B

**Inputs** 5 Line, 1 Tape IN, Input DIRECT  
Phono at IN-4 (**OPTIONAL**), USB (**OPTIONAL**)

**Inputs** 5 Line, = 10 Kohm  
**Impedance** **Note : if not selected, the inputs are not terminated at any resistance load. Please give attention in use with source with output capacitor not internal terminated with resistor load. During the input switch an DC output voltage can be applied to speakers output and damage the speakers.**

**Phono** Gain 36 dB / 1 kHz, Input Impedance 47 Kohm  
(**Input Impedance and Gain variable on PC Board**)

**Outputs** 1 REC OUT, 2 pair of Main Speakers Outputs,

**Frequency Response** 0-800 KHz (**Volume at MAX**)

**Power** 2x 70 W RMS / 8 Ohm - 140 W RMS / 4 Ohm

**Outputs Current** 24 A continuous, 100 A peak (each channel)

**Sensitivity** 237 mV for 70 W / 8 Ohm  
(**Volume at MAX**)

**Gain** 40 dB (**28mV – 1W / 8 Ohm**)  
(**Volume at MAX**)

**Supply** 230 V AC / 50 Hz, (**100V AC or 115 VAC / 50-60Hz in some country**)

**Dimensions (HxWxD)** 90 x 440 x 360 mm

**Note** Integrated amplifier with full remote control by NORMA IR

In order to improve its products, NORMA reserves the right to vary all the technical specifications and appearance without notice.

**Model** **REVO 70B-USB**

**Version** \_\_\_\_\_

**Accessories** \_\_\_\_\_

**Serial Number** \_\_\_\_\_

**Frist Tester** \_\_\_\_\_

**Second Tester** \_\_\_\_\_

**Third Tester** \_\_\_\_\_

**Date** \_\_\_\_\_

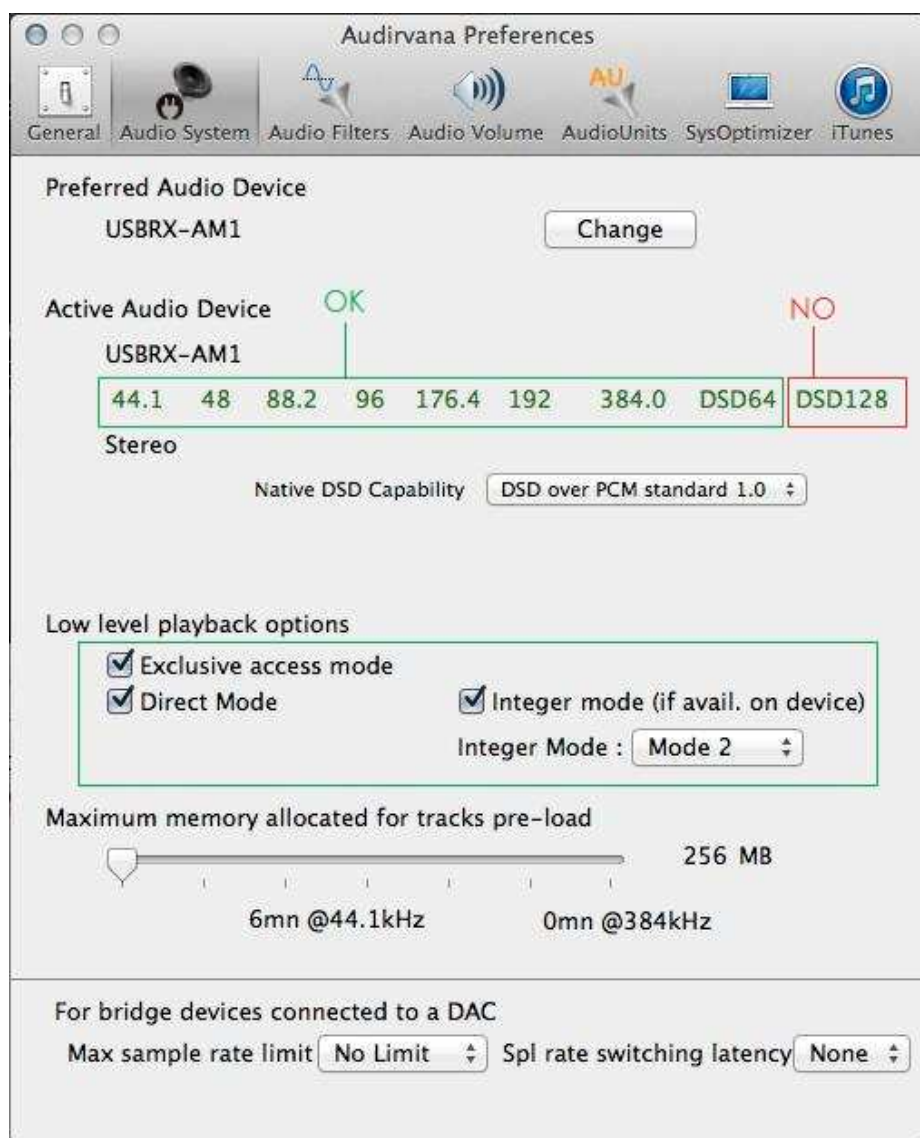
## 6 USB CONNECTION GUIDELINES

The world of computers and digital devices is an ever changing one, so it is hard to write an exhaustive guide on how to properly use them in order to achieve the best sound performance. Various software and protocols of transmission exist. What we want to do, is provide you with some indication on how to get what we believe is a very good result, and to avoid some mistakes that could make your sound worse or even cause some damage.

### 6.1 Direct Mode, Integer Mode

Almost all operative systems, as a default, will interfere on the audio stream from the player to the USB device by introducing re-sampling, dithering, and possibly various other artifacts, compromising the audio quality of your files, and preventing you to enjoy your music at its best. Almost every audiophile-grade music player will allow you to activate some sort of mechanism in order to avoid those interferences. To describe all of them would be impossible, what we will do is recommend to you a music player we have experience with, Audirvana +. (<http://audirvana.com/>)

The new USB board for the REVO IPA-70B is 100% compatible with Direct Mode and Integer Mode in Audirvana +. Activate the options as in the following image, and you will be able to experience the full quality of High Resolution music files, making a real difference over CD.

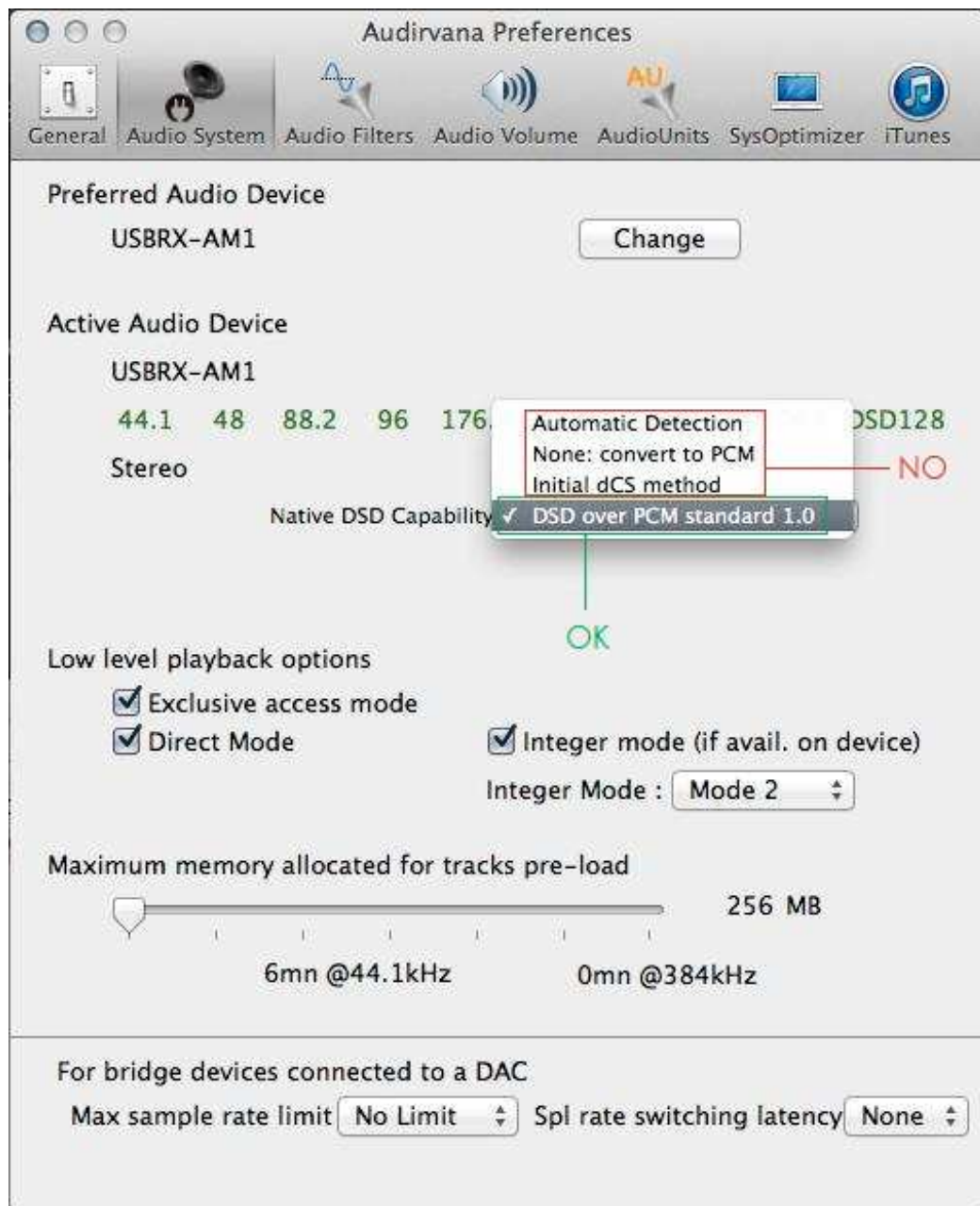


## 6.2 DSD transmission protocol WARNING

The USB board and converter of the IPA-70B are compatible with DSD64 files.

The ONLY transmission protocol supported is "DSD over PCM". Do NOT use any other transmission protocol for DSD, this could result in serious damage, as it transmits signals that are not recognized by the device, and could therefore be interpreted in non-predictable ways.

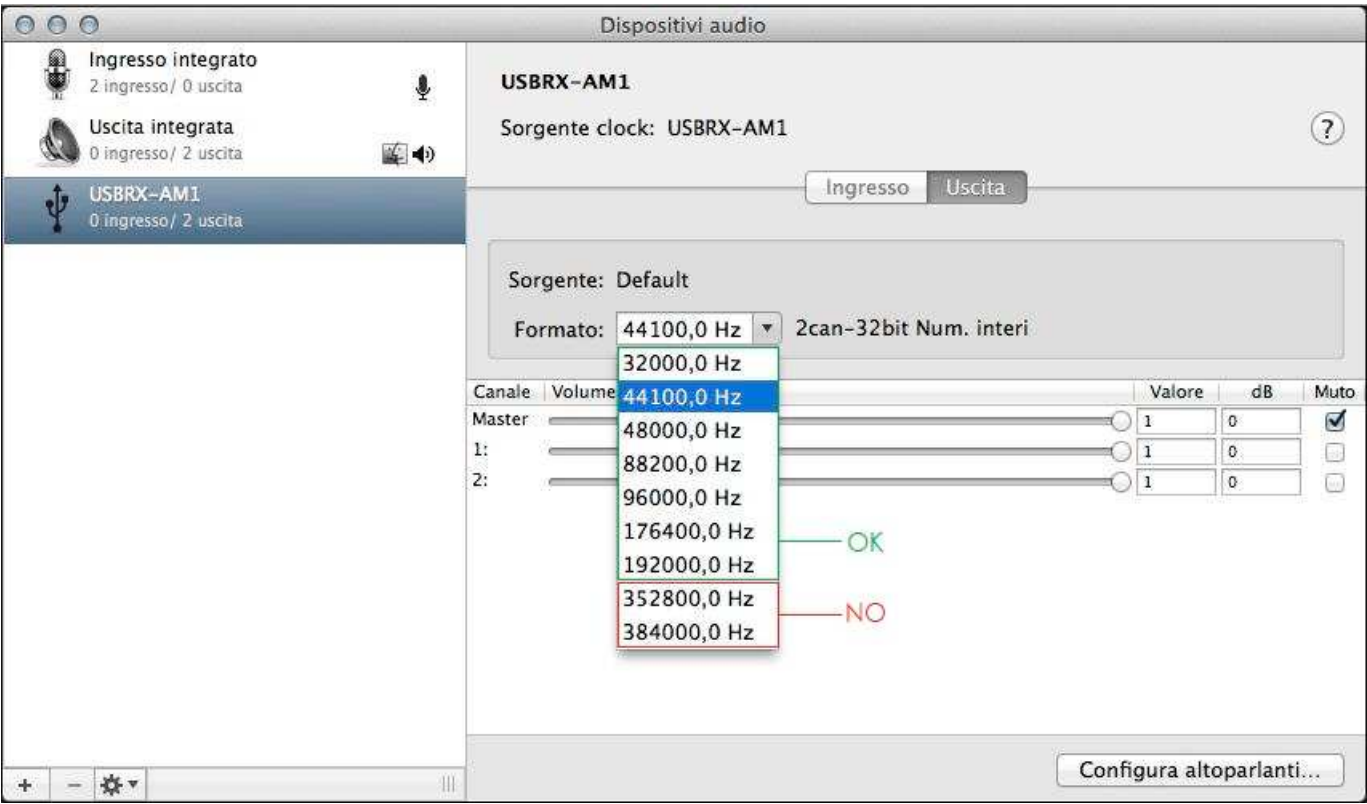
In the following image, you can see an example of what NOT to do in Audirvana +.





6.3 Sampling frequency setup on Apple devices

The REVO IPA-70B USB board works at up to 192 KHz. If signal is streamed at higher frequencies, the board will not recognize it as a workable signal, and will therefore mute the output. Please remember to deactivate any up-sampling above 192 KHz. In the following image, you can see how to set it properly in MIDI setup an Apple Devices.

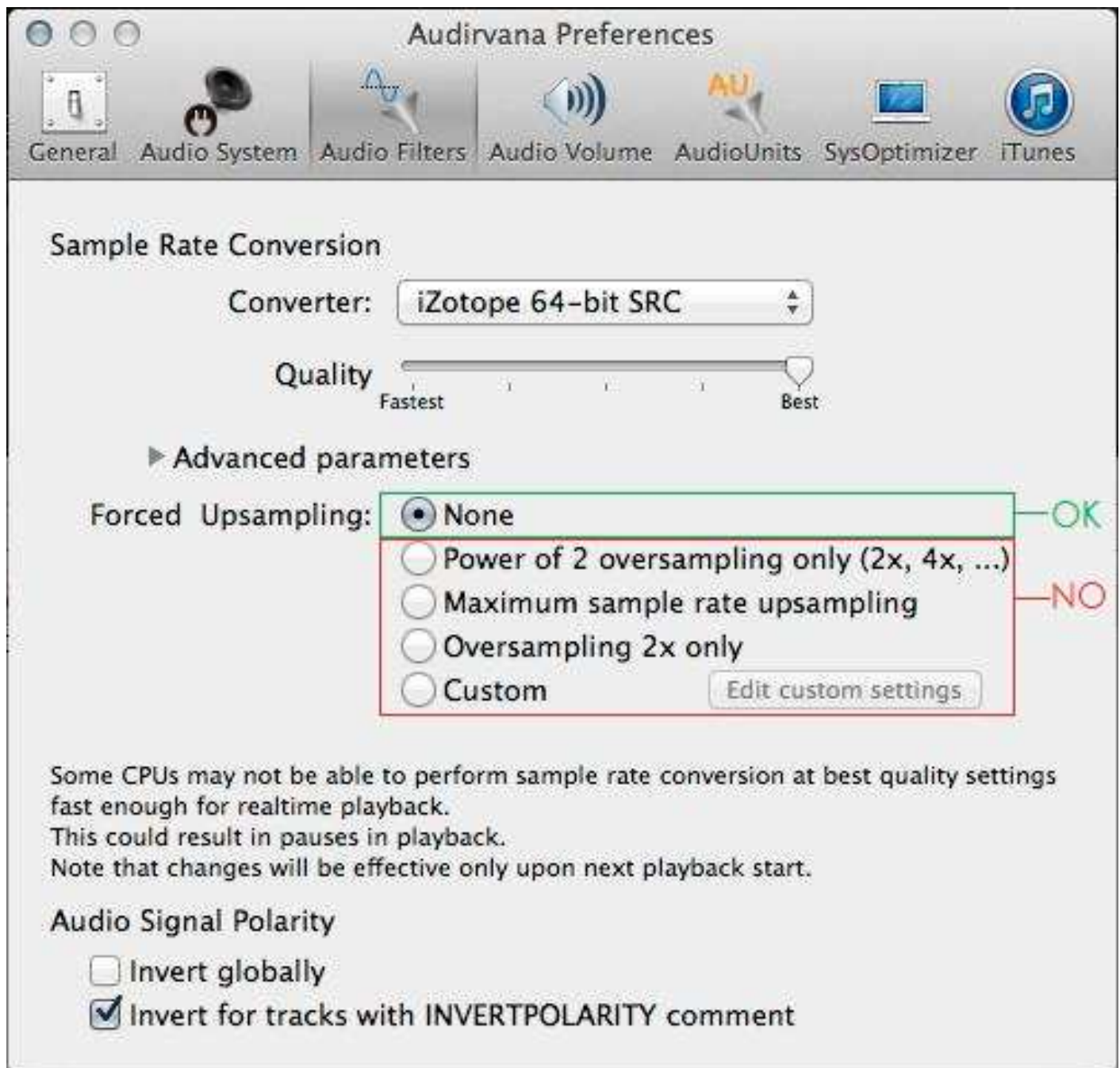


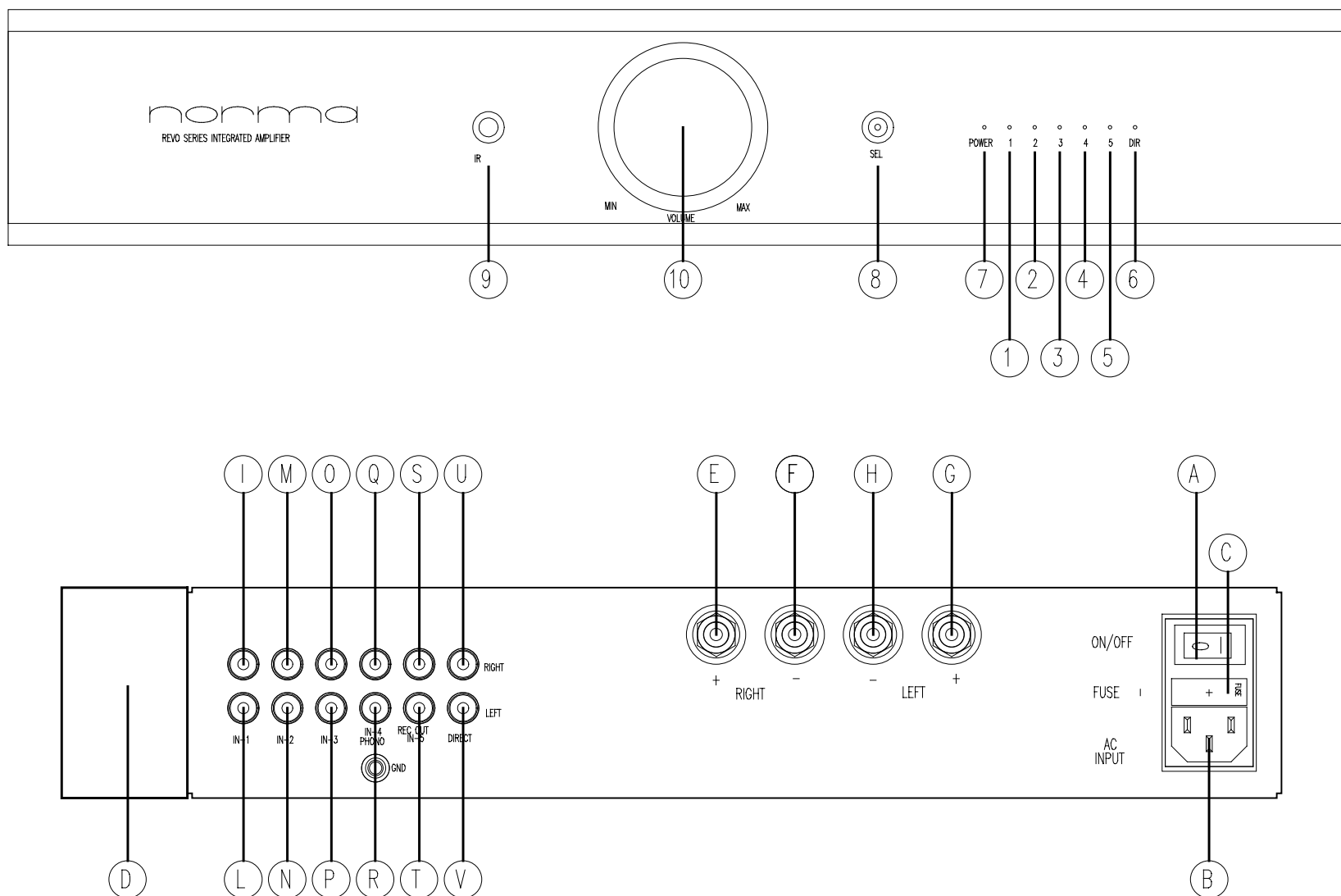
Note: Apple and Audirvana+ are registered trademarks and are property of the respective owners.

## 6.4 Resampling

In order to achieve the best possible sound quality, we suggest to the user to respect the sampling rate of the original file, and therefore to deactivate any form of software oversampling. We have already shown you how to deactivate oversampling in the MIDI setup menu on Apple devices, now we show you how to deactivate it in the Audirvana + player.

In the "Preferences" menu, select the "Audio Filters" tab, and select "none" as the Forced Upsampling option. This way the output sampling frequency will be the same one as your source file's.





REVO SERIES, Elenco comandi e connessioni.